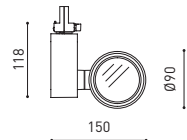




					W	K	mA	Lm	%Eff
ZEN LED 1	A183-01- ① -1- WT NT				12W	3000K	350	1750	90%
	A183-01- ① -2- WT NT				12W	4000K	350	1800	90%
ZEN LED 2	A183-02- ① -1- WT NT				18W	3000K	500	2400	90%
	A183-02- ① -2- WT NT				18W	4000K	500	2450	90%
	A183-12- ① -1- WT NT	▲▲▲			18W	3000K	500	2400	90%
	A183-12- ① -2- WT NT	▲▲▲			18W	4000K	500	2450	90%
ZEN LED 3	A183-03- ① -1- WT NT				21W	3000K	640	3100	90%
	A183-03- ① -2- WT NT				21W	4000K	640	3200	90%
	A183-13- ① -1- WT NT **	▲▲▲			21W	3000K	640	3100	90%
	A183-13- ① -2- WT NT **	▲▲▲			21W	4000K	640	3200	90%



					W	K	mA	Lm	%Eff
ZEN LED 1	A283-01- ① -1- WT NT				12W	3000K	350	1450	90%
	A283-01- ① -2- WT NT				12W	4000K	350	1500	90%
ZEN LED 2	A283-02- ① -1- WT NT				18W	3000K	500	2000	90%
	A283-02- ① -2- WT NT				18W	4000K	500	2050	90%
	A283-12- ① -1- WT NT	▲▲▲			18W	3000K	500	2000	90%
	A283-12- ① -2- WT NT	▲▲▲			18W	4000K	500	2050	90%
ZEN LED 3	A283-03- ① -1- WT NT				21W	3000K	640	2600	90%
	A283-03- ① -2- WT NT				21W	4000K	640	2700	90%
	A283-13- ① -1- WT NT **	▲▲▲			21W	3000K	640	2600	90%
	A283-13- ① -2- WT NT **	▲▲▲			21W	4000K	640	2700	90%

① BEAM OPTIONS

1	16°
2	24°
3	42°

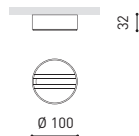




accessories

TRACKLIGHT Surface Adapter

- 0000-55-43- | W |
- 0000-55-39- | N |



COVER OPTIONS

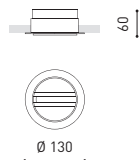
- | | | |
|--|--------|------------|
| | Walnut | 0702-00-01 |
| | Iroko | 0702-00-02 |
| | Ash | 0702-00-03 |

FOOD FILTER OPTIONS

- | | | |
|--|-------|------------|
| | Bread | 0700-07-01 |
| | Meat | 0700-07-02 |
| | Fish | 0700-07-03 |

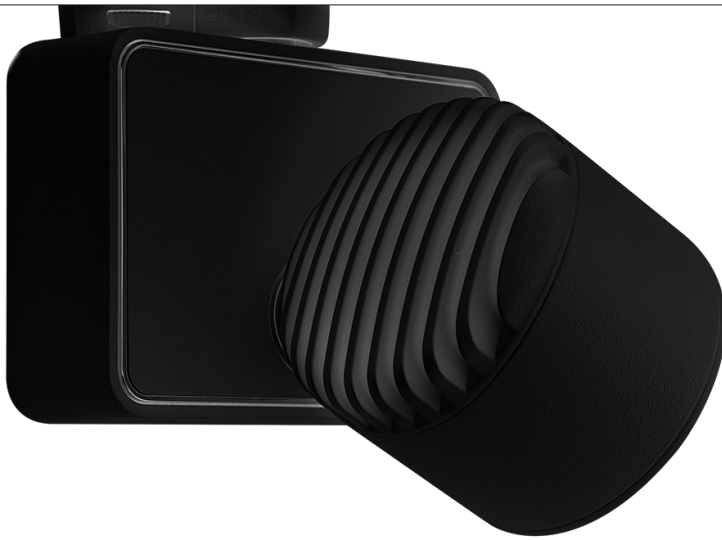
TRACKLIGHT Recessed Adapter

- 0000-55-44- | W |
- 0000-55-40- | N |



FILTER OPTIONS

- | | | |
|--|--------|------------|
| | Red | 0702-01-01 |
| | Blue | 0702-01-02 |
| | Green | 0702-01-03 |
| | Orange | 0702-01-04 |
| | Yellow | 0702-01-05 |



ZEN LED 3000K

LED 16° | 3000 K

C90 - C270 η L: 0.90 100-100-100-100-90 DIN A60 UTE 0.90 A CIBSE BZ 1 η = 90%	CRI>80												CRI>90											
	12 W				18 W				21 W				12 W				18 W				21 W			
h (m)	d (m)	Emed (lux)	Emax (lux)	h (m)	d (m)	Emed (lux)	Emax (lux)	h (m)	d (m)	Emed (lux)	Emax (lux)	h (m)	d (m)	Emed (lux)	Emax (lux)	h (m)	d (m)	Emed (lux)	Emax (lux)	h (m)	d (m)	Emed (lux)	Emax (lux)	
1	0.30	5935	7959	1	0.30	7843	10517	1	0.30	10811	14497	1	0.30	4875	6538	1	0.30	6359	8528	1	0.30	9539	12791	
2	0.59	1484	1990	2	0.59	1960	2629	2	0.59	2702	3624	2	0.59	1218	1634	2	0.59	1590	2132	2	0.59	2385	3198	
3	0.89	659	884	3	0.89	871	1169	3	0.89	1201	1611	3	0.89	541	726	3	0.89	707	948	3	0.89	1060	1421	
4	1.18	370	497	4	1.18	490	657	4	1.18	675	906	4	1.18	305	409	4	1.18	397	533	4	1.18	596	799	

LED 24° | 3000 K

C90 - C270 η L: 0.90 100-100-100-100-90 DIN A60 UTE 0.90 A CIBSE BZ 1 η = 90%	CRI>80												CRI>90											
	12 W				18 W				21 W				12 W				18 W				21 W			
h (m)	d (m)	Emed (lux)	Emax (lux)	h (m)	d (m)	Emed (lux)	Emax (lux)	h (m)	d (m)	Emed (lux)	Emax (lux)	h (m)	d (m)	Emed (lux)	Emax (lux)	h (m)	d (m)	Emed (lux)	Emax (lux)	h (m)	d (m)	Emed (lux)	Emax (lux)	
1	0.44	3307	4509	1	0.44	4370	5958	1	0.44	6024	8212	1	0.44	2717	3704	1	0.44	3544	4831	1	0.44	5315	7246	
2	0.88	827	1127	2	0.88	1092	1489	2	0.88	1506	2053	2	0.88	679	926	2	0.88	886	1208	2	0.88	1329	1812	
3	1.32	367	501	3	1.32	485	662	3	1.32	669	912	3	1.32	302	412	3	1.32	394	537	3	1.32	590	805	
4	1.76	207	282	4	1.76	273	372	4	1.76	376	513	4	1.76	169	231	4	1.76	221	302	4	1.76	332	453	

LED 42° | 3000 K

C90 - C270 η L: 0.90 100-100-100-100-90 DIN A60 UTE 0.90 A CIBSE BZ 1 η = 90%	CRI>80												CRI>90											
	12 W				18 W				21 W				12 W				18 W				21 W			
h (m)	d (m)	Emed (lux)	Emax (lux)	h (m)	d (m)	Emed (lux)	Emax (lux)	h (m)	d (m)	Emed (lux)	Emax (lux)	h (m)	d (m)	Emed (lux)	Emax (lux)	h (m)	d (m)	Emed (lux)	Emax (lux)	h (m)	d (m)	Emed (lux)	Emax (lux)	
1	0.77	1496	2126	1	0.77	1977	2809	1	0.77	2725	3872	1	0.77	1229	1746	1	0.77	1603	2278	1	0.77	2405	3417	
2	1.54	374	531	2	1.54	494	702	2	1.54	681	968	2	1.54	307	437	2	1.54	400	569	2	1.54	601	854	
3	2.32	166	236	3	2.32	219	312	3	2.32	302	430	3	2.32	136	194	3	2.32	178	253	3	2.32	267	380	
4	3.09	93	133	4	3.09	124	176	4	3.09	170	242	4	3.09	77	109	4	3.09	100	142	4	3.09	150	214	



ZEN LED 4000K

LED 16° | 4000 K

C90 - C270 105° 90° 75° 60° 45° 30° 15° 0° η = 90%	CIE η L: 0.90 100-100-100-100-90 DIN A60 UTE 0.90 A CIBSE BZ 1	CRI>80												CRI>90											
		12 W				18 W				21 W				12 W				18 W				21 W			
h (m)	d (m)	Emed (lux)	Emax (lux)	h (m)	d (m)	Emed (lux)	Emax (lux)	h (m)	d (m)	Emed (lux)	Emax (lux)	h (m)	d (m)	Emed (lux)	Emax (lux)	h (m)	d (m)	Emed (lux)	Emax (lux)	h (m)	d (m)	Emed (lux)	Emax (lux)		
1	0.30	6359	8528	1	0.30	8267	11086	1	0.30	11235	15066	1	0.30	5299	7106	1	0.30	6783	9096	1	0.30	9963	13360		
2	0.59	1590	2132	2	0.59	2066	2771	2	0.59	2808	3766	2	0.59	1325	1777	2	0.59	1696	2274	2	0.59	2491	3340		
3	0.89	707	948	3	0.89	918	1232	3	0.89	1248	1674	3	0.89	589	790	3	0.89	754	1011	3	0.89	1107	1484		
4	1.18	397	533	4	1.18	517	693	4	1.18	702	942	4	1.18	331	440	4	1.18	424	569	4	1.18	622	835		

LED 24° | 4000 K

C90 - C270 105° 90° 75° 60° 45° 30° 15° 0° η = 90%	CIE η L: 0.90 100-100-100-100-90 DIN A60 UTE 0.90 A CIBSE BZ 1	CRI>80												CRI>90											
		12 W				18 W				21 W				12 W				18 W				21 W			
h (m)	d (m)	Emed (lux)	Emax (lux)	h (m)	d (m)	Emed (lux)	Emax (lux)	h (m)	d (m)	Emed (lux)	Emax (lux)	h (m)	d (m)	Emed (lux)	Emax (lux)	h (m)	d (m)	Emed (lux)	Emax (lux)	h (m)	d (m)	Emed (lux)	Emax (lux)		
1	0.44	3544	4831	1	0.44	4607	6280	1	0.44	6260	8534	1	0.44	2953	4026	1	0.44	3780	5153	1	0.44	5551	7568		
2	0.88	886	1208	2	0.88	1151	1570	2	0.88	1565	2134	2	0.88	738	1006	2	0.88	945	1288	2	0.88	1388	1892		
3	1.32	394	537	3	1.32	512	698	3	1.32	695	948	3	1.32	328	447	3	1.32	420	573	3	1.32	617	814		
4	1.76	221	302	4	1.76	287	392	4	1.76	391	533	4	1.76	185	252	4	1.76	236	322	4	1.76	347	473		

LED 42° | 4000 K

C90 - C270 105° 90° 75° 60° 45° 30° 15° 0° η = 90%	CIE η L: 0.90 100-100-100-100-90 DIN A60 UTE 0.90 A CIBSE BZ 1	CRI>80												CRI>90											
		12 W				18 W				21 W				12 W				18 W				21 W			
h (m)	d (m)	Emed (lux)	Emax (lux)	h (m)	d (m)	Emed (lux)	Emax (lux)	h (m)	d (m)	Emed (lux)	Emax (lux)	h (m)	d (m)	Emed (lux)	Emax (lux)	h (m)	d (m)	Emed (lux)	Emax (lux)	h (m)	d (m)	Emed (lux)	Emax (lux)		
1	0.77	1603	2278	1	0.77	2084	2961	1	0.77	2832	4024	1	0.77	1336	1898	1	0.77	1710	2430	1	0.77	2511	3568		
2	1.54	801	569	2	1.54	521	740	2	1.54	708	1006	2	1.54	334	475	2	1.54	427	607	2	1.54	628	892		
3	2.32	178	253	3	2.32	231	329	3	2.32	314	447	3	2.32	148	211	3	2.32	190	270	3	2.32	279	396		
4	3.09	100	142	4	3.09	130	185	4	3.09	177	252	4	3.09	83	119	4	3.09	107	152	4	3.09	157	223		